



HOW TO READ YOUR RESIDENTIAL SOLAR METER



Solar Energy Purchase Credit Program (EP)

Residential solar customers on the Energy Purchase Credit Program (EP) have a meter installed that looks the same as a standard residential meter but is capable of tracking Grid Consumption, excess Generation and Demand.

Scrolling Displays

The meter scrolls through four displays every five to six seconds.

Display Test -

The screen will display all 888888's to check that all the fields are working properly.

888 88.88.8.8

Delivered kWh -

This is the total kilowatt-hours delivered to your home from the Lodi Electric Grid.

dEl 15242 kWh

Delivered kW -

This is your energy demand which is currently not billed to residential customers. Demand is the maximum amount of energy used in any one hour interval within a billing period.

dEl 00.015 kW

Received kWh -

This is the total kilowatt-hours received by the Lodi Electric Grid from your solar system. The received kWh will show as a credit on your bill.

rEc 11572 kWh

Statistical Meter

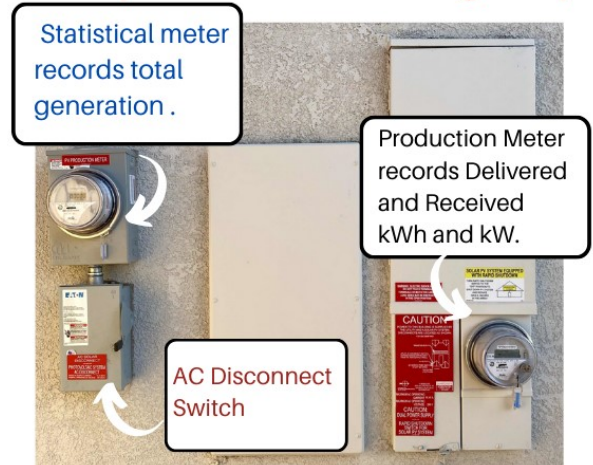
This is a separate meter that tracks all solar generation produced by your solar system.

Generation kWh -

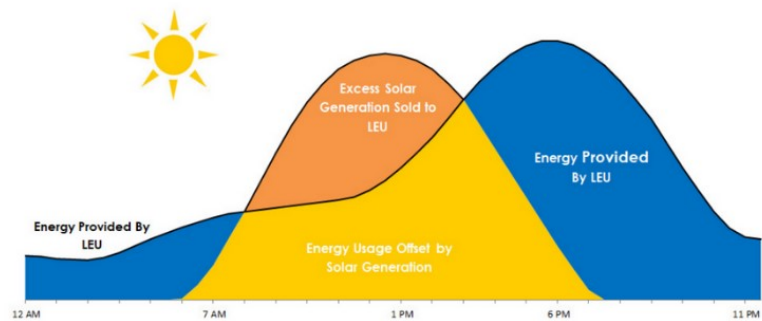
Your total system generation is recorded each month on your meter read day. The total generation includes energy that offsets your consumption or delivered power.

01567 kWh

Example of a solar metering setup



Example of energy delivered, received and offset:



Excess solar generation not used by your household is sent to and Received by the Lodi Electric Grid. You will receive a credit on your bill for your excess generation. This is your EP credit.

Energy Usage offset happens when your solar generation is providing enough power to cover your household consumption. Without solar this consumption would be provided to you by the Lodi Electric grid at the retail rate.

Energy Provided by LEU happens when your solar system is not generating any power or too little power. This will happen when the sun sets or if your household power needs exceed your generation during the daylight hours. This power is Delivered to your home from the Lodi Electric Grid and is billed at the retail rate.