



LODI CITY COUNCIL

Carnegie Forum
305 West Pine Street, Lodi

Streaming Link:

<https://www.facebook.com/CityofLodi/>

<https://zoom.us/j/93455719476?pwd=NDdhc1E4OEZyYWV3d2pDY1U5SjVZZz09>

AGENDA
Shirtsleeve Session
Date: April 20, 2021
Time: 7:00 a.m.

SPECIAL NOTICE

Effective immediately and while social distancing measures are imposed, Council chambers will be closed to the public during meetings of the Lodi City Council.

The following alternatives are available to members of the public to watch Council meetings and provide comments on agenda and non-agenda items before and during the meetings.

Viewing:

Members of the public may view and listen to the open session of the meeting at <https://www.facebook.com/CityofLodi/>; or

Please click the link below to join the meeting:

<https://zoom.us/j/93455719476?pwd=NDdhc1E4OEZyYWV3d2pDY1U5SjVZZz09>

Passcode: 583605

Or iPhone one-tap :

US: +16699009128,,97500264844#

Or Telephone: Dial: US +1 669 900 9128

Webinar ID: 934 5571 9476

Public Comment:

Members of the public can send written comments to the City Council prior to the meeting by emailing councilcomments@lodi.gov. These emails will be provided to the members of the City Council and will become part of the official record of the meeting.

Members of the public who wish to verbally address the City Council during the meeting should email those comments to councilcomments@lodi.gov. Comments must be received before the Mayor or Chair announces that the time for public comment is closed. The Assistant City Clerk will read three minutes of each email into the public record. **IMPORTANT:** Identify the Agenda Item Number or Oral Communications in the subject line of your email. Example: Public Comment for Agenda Item Number C-17. Members of the public may also participate via Zoom at the following link: <https://zoom.us/j/93455719476?pwd=NDdhc1E4OEZyYWV3d2pDY1U5SjVZZz09>

Pursuant to the Americans with Disabilities Act (ADA) and Executive Order N-29-20, if you need special assistance to provide public comment in this meeting, please contact the Office of the City Clerk at (209) 333-6702 or cityclerk@lodi.gov at least 48 hours prior to the meeting in order for the City to make reasonable alternative arrangements for you to communicate your comments. If you need special assistance in this meeting for purposes other than providing public comment, please contact the Office of the City Clerk at (209) 333-6702 or cityclerk@lodi.gov at least 48 hours prior to the meeting to enable the City to make reasonable arrangements to ensure accessibility to this meeting (28 CFR 35.160 (b) (1)).

SPECIAL TELECONFERENCE NOTICE

Pursuant to Executive Order N-29-20:

The Brown Act, Government Code Section 54953, contains special requirements that apply when members of a legislative body participate in a public meeting by telephone. Certain of these requirements have been suspended by Paragraph 3 of Executive Order N-29-20, executed by the Governor of California on March 17, 2020, to mitigate the spread of Coronavirus (COVID-19). In particular, the Executive Order suspends that provision of the Brown Act that requires noticing, posting of agendas, and public access to each location where a member will be participating telephonically, as well as provisions that require physical presence of members of the legislative body or the public for purposes of a quorum or to hold a meeting. Executive Order N-29-20 allows an agency to conduct a teleconference meeting that provides members of the public telephonic or other electronic participation in place of making a physical location for the public to observe the meeting and provide public comment, consistent with other provisions of the Brown Act.

For information regarding this Agenda please contact:
Jennifer Cusmir
City Clerk
Telephone: (209) 333-6702

Informal Informational Meeting

A. Roll Call by City Clerk

B. Topic(s)

B-1 Feasibility of Providing Retail Electric Service Near Interstate 5 (EU)

C. Comments by Public on Non-Agenda Items

D. Adjournment

Pursuant to Section 54954.2(a) of the Government Code of the State of California, this agenda was posted at least 72 hours in advance of the scheduled meeting at a public place freely accessible to the public 24 hours a day.

Jennifer Cusmir
City Clerk

All staff reports or other written documentation relating to each item of business referred to on the agenda are on file in the Office of the City Clerk, located at 221 W. Pine Street, Lodi, and are available for public inspection. If requested, the agenda shall be made available in appropriate alternative formats to persons with a disability, as required by Section 202 of the Americans with Disabilities Act of 1990 (42 U.S.C. Sec. 12132), and the federal rules and regulations adopted in implementation thereof. To make a request for disability-related modification or accommodation contact the City Clerk's Office as soon as possible and at least 72 hours prior to the meeting date. Language interpreter requests must be received at least 72 hours in advance of the meeting to help ensure availability. Contact Jennifer Cusmir at (209) 333-6702. Solicitudes de interpretación de idiomas deben ser recibidas por lo menos con 72 horas de anticipación a la reunión para ayudar a asegurar la disponibilidad. Llame a Jennifer Cusmir (209) 333-6702.



CITY OF LODI COUNCIL COMMUNICATION

TM

AGENDA TITLE: Feasibility of Providing Retail Electric Service Near Interstate 5

MEETING DATE: April 20, 2021

PREPARED BY: Electric Utility Director

RECOMMENDED ACTION: Receive presentation on feasibility of providing retail electric service near Interstate 5.

BACKGROUND INFORMATION: Lodi Electric Utility continues to receive inquiries regarding the ability of Lodi Electric Utility to provide retail electric service to potential customers in the vicinity of White Slough at Interstate 5 near the Lodi Energy Center.

The Lodi Electric Utility (LEU), while it reserves the right to provide electric service within Lodi City limits, does not currently have electrical infrastructure by way of a distribution system in order to provide retail electric service to customers as it relates to the incorporated area out at White Slough. LEU currently “serves” two customers west of Interstate 5 through an interconnection agreement with Northern California Power Agency (NCPA) whereby those two customers are sub-metered from existing NCPA generating facilities served by PG&E and subject to outages when NCPA facilities are down for routine maintenance and/or emergency repairs.

Based on a most recent request for a potential project near White Slough and Interstate 5, LEU requested the assistance of NCPA to help identify the estimated costs and feasibility associated with building out an electric distribution system to serve potential load in that area. While the discussion regarding availability of City owned property at White Slough for future development would be a separate discussion led by the Public Works Department, this presentation to City Council will focus on the significant costs, challenges and timing associated with building out the required electric infrastructure to serve possible future energy needs near Interstate 5.

FISCAL IMPACT: Not applicable.

FUNDING AVAILABLE: Not applicable.

Jeff Berkheimer
Electric Utility Director

APPROVED: _____
Stephen Schwabauer, City Manager



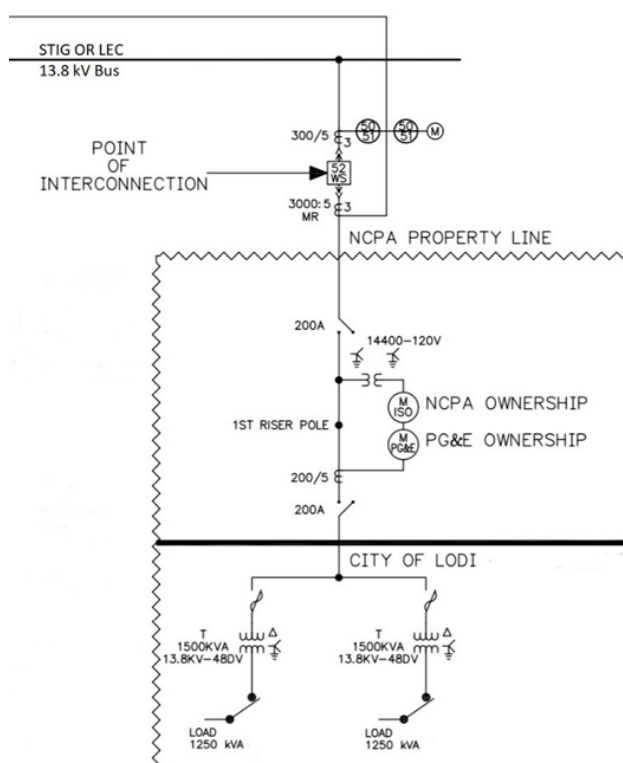
Lodi Electric Utility Feasibility of Providing Retail Electric Service Near Interstate 5

Presented by: Jeff Berkheimer, Director
Lodi Electric Utility
Lodi City Council Shirtsleeve
April 20, 2021

Presentation Overview - Preview

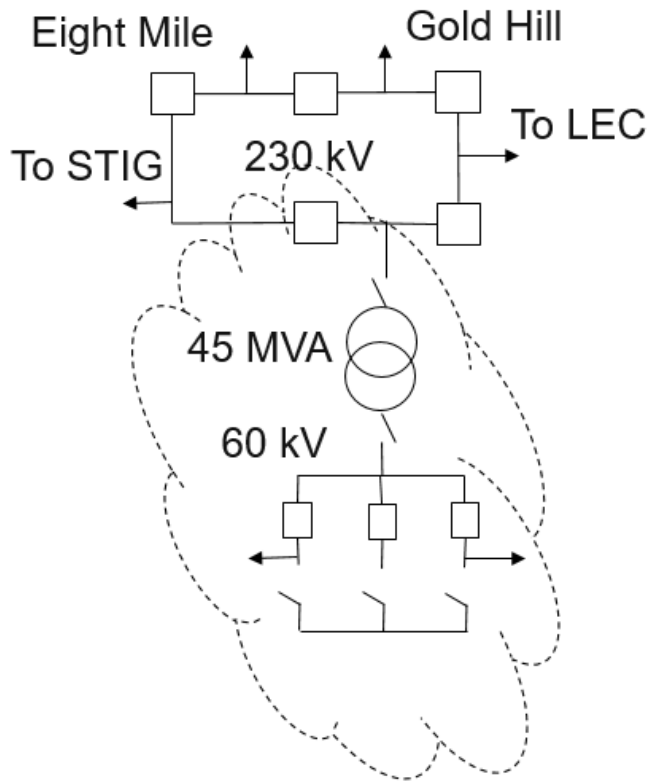
- Project Options
 - Option 1 – NCPA 3 MVA Customer Feeder (NOT Rule 2 Compliant)
 - NOT a feasible option in terms of providing retail electric service to commercial/industrial customers
 - Option 2 – NCPA 45/30 MVA Substation with 11 Breakers
 - Option 3 – PG&E 45/10 MVA Substation with 3 Reclosers
- Projected Costs Summary Table
 - Approximately \$14-\$18 Million – not including any needed system upgrades if identified by PG&E
- Potential Schedule
 - At least 3-4 years – not including any needed system upgrades if identified by PG&E
- Conclusions

Interconnection Options – Option 1

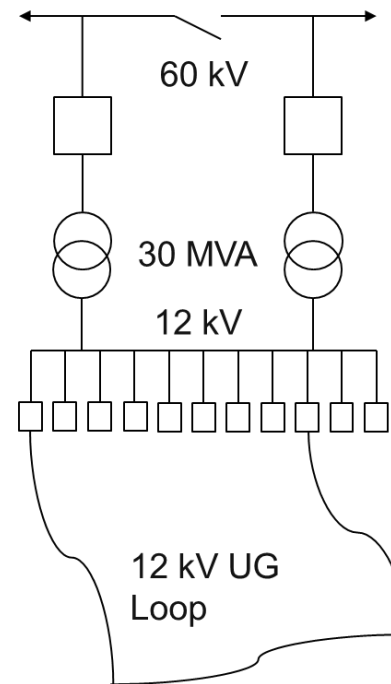


- Connection to STIG or LEC Facilities
 - Similar to existing connection for White Slough
- NOT Rule 2 Compliant
- No separate feeder for loads in the event of a plant or transmission system outage

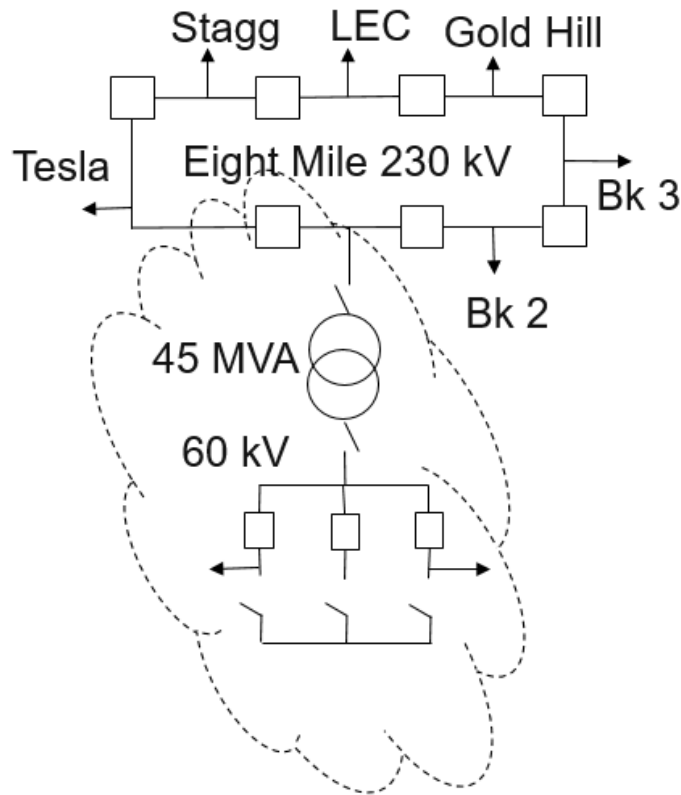
Interconnection Options – Option 2 (NCPA)



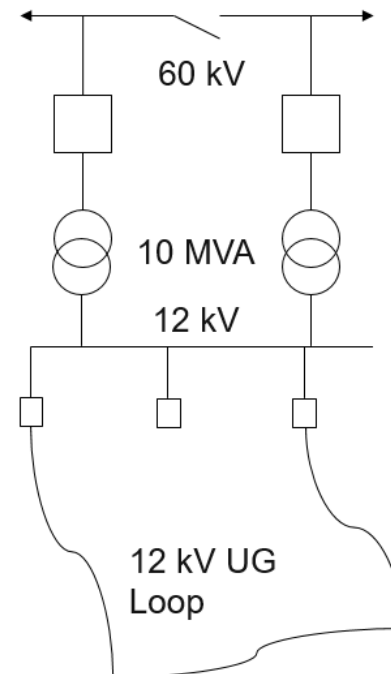
- 230 kV Transmission on LEC Ring Bus
- 60 kV Connection from NCPA



Interconnection Options – Option 3 (PG&E)



- 230 kV Transmission on 8 Mile Ring Bus
- 60 kV Connection from PG&E



Cost Element	Option 1 NCPA 3 MVA (NOT Rule 2 Compliant)	Option 2 NCPA 45/30 MVA	Option 3 PG&E 45/10 MVA
Transmission Substation	N/A – Existing STIG or LEC 230 kV Breakers	\$4.5M	\$6.5M
Distribution Substation	\$420k	\$3.165M	\$5M
Distribution Feeder	\$1.2M	\$750k	\$750k
Switching	\$300k	\$800k	\$600k
Site Development	\$450k	\$500k	\$500k
Engineering/ Permitting (includes \$200k for System Study)	\$520k	\$700k	\$1M
Construction	N/A – Included Above	\$3.975M	\$4.0M
TOTAL	\$2.89M	\$14.39M	\$18.35M

Does not include increased costs for maintenance of separate system; staffing requirements; impacts to reliability as it relates to ability to restore outages in timely manner

Potential Schedule

Activity	Option 1 NCPA 3 MVA (NOT Rule 2 Compliant)	Option 2 NCPA 45/30 MVA	Option 3 PG&E 45/10 MVA
Design Contract Execution	2 Months	3 Months	2 Months
Design	6 Months	8 Months	10 Months
Permitting	4 Months	10 Months	12 Months
Construction Bid & Contract	4 Months	5 Months	5 Months
Construction	4 Months	10 Months	10 Months
PG&E Inspection	3 Months	4 Months	2 Months
Testing	2 Months	3 Months	2 Months
TOTAL	2 Years, 1 Month	3 Years, 7 Months	3 Years, 7 Months

Conclusions

- Discussion still needed with Public Works regarding land availability and pricing for any future development
- Utility would need to incur the full cost and build infrastructure to meet highest energy demand anticipated to maximize investment
- Customers seeking only standby capacity would require LEU to “reserve” capacity
 - Needs are trending toward self-generation configurations
- Investing millions in additional infrastructure would require guarantee/commitment regarding future electrical needs to minimize risk to LEU and existing rate payers
- No guarantees on timing and/or cost as it relates to any system planning/upgrade requirements by PG&E