



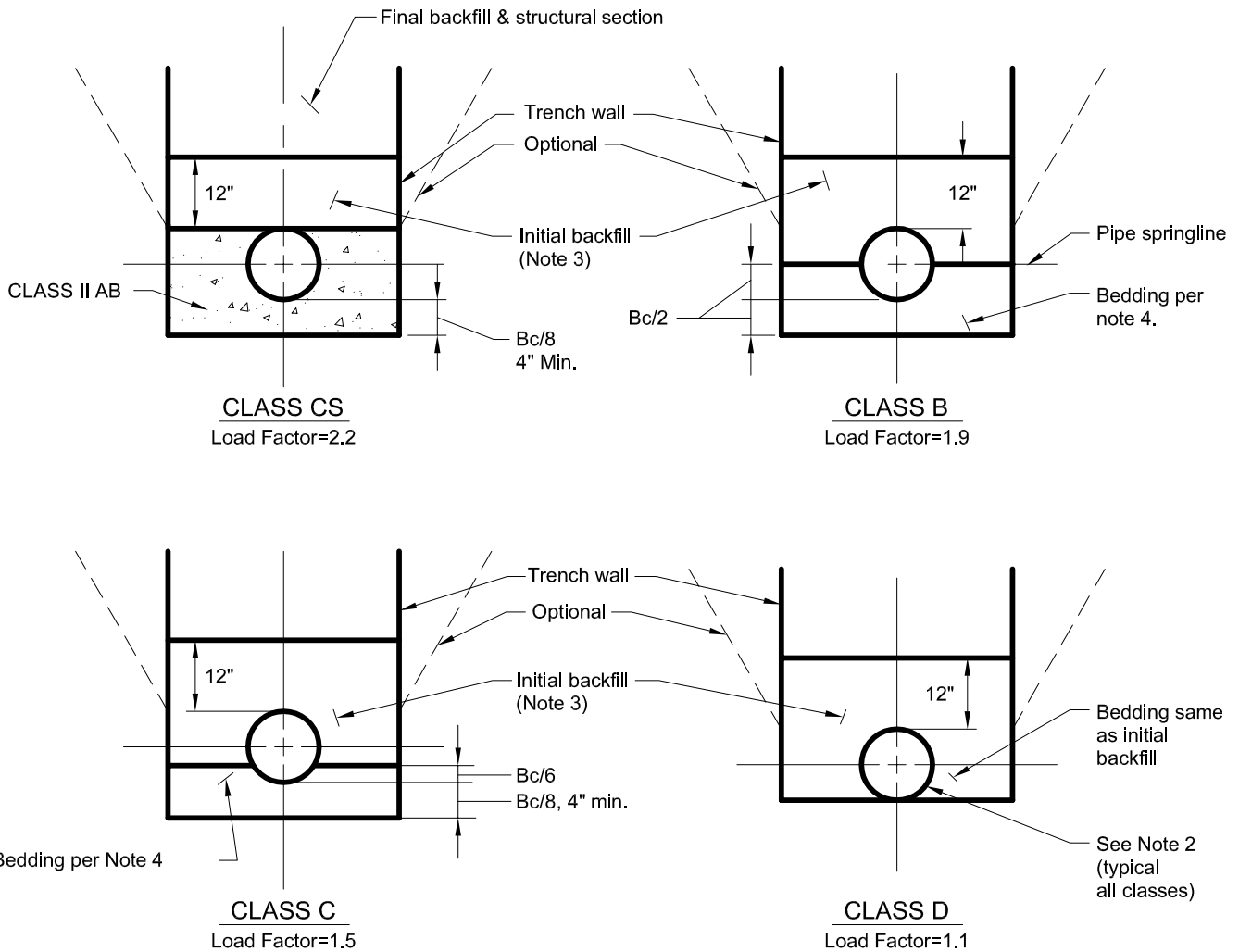
CITY OF LODI

PUBLIC WORKS DEPARTMENT

Pipe Bedding & Backfill- Rigid Pipe Trench Section

Legend:

D=Nominal pipe inside diameter (in.)
 Bc=Pipe outside diameter (in.)
 Bd=Trench width @ top of pipe=Bc+8" min. each side (24" total minimum)



Notes:

1. This Standard is for rigid pipes 4" & larger; conforming to City Design Stds and Construction Specifications. Use Trench Class as shown on the plans; if not specified, use appropriate class per pipe material and depth of cover per Std Plan 501C.
2. Provide uniform & continuous support of pipe barrel between bell or coupling holes.
3. Initial backfill shall be selected sandy material per Construction Spec. Sect.6-19.02 @ 90% R.C. min.
4. Class B & C bedding material to be Class II AB or sand as specified on the plans.

Dr.	JP	No.	Date	Revision	Appr.	Approved By:	STD PLAN
		1	6/00	ADDED C900 PIPE		<i>Charles Swimley</i>	501B
Ch.	LC	2	8/13	REMOVE CRUSHED ROCK MATERIAL			
Date	8/13					Charlie Swimley City Engineer / Deputy Public Works Director RCE NO. 52842	8/19/13 Date